



Sharon Yavo-Ayalon

Selected Academic & Professional Works

Sharon Yavo-Ayalon

Selected Academic & Professional Works



My research and teaching interests are situated at the juncture of architecture and urban design, art, social theory, and technology. I believe in utilizing innovation in art and technology to create more equitable urban spaces.

I am particularly passionate about sharing knowledge and fostering connections between academia and local communities. I do that by fostering collaboration and using participatory practices to engage communities to be active in changing their urban environment.

By converging the various disciplines of art, architecture, technology, and sociology to give shape to abstract social issues, I aim to bring them to the forefront of public attention and re-imagine more equitable cities.

Research

The Social Distancing Project
Roosevelt Island Digital Twin
Staging Urbanism

Architecture & Town Planning

Scroll of Light Synagogue
Maalot Music Center
Matzliach Neighborhood
Pine Hill

Courses

Urban Systems
Basic Design
Urban Challenge
Curation as an Architecture Practice

Curation

The Bedouin School Building Khan Al
Ahmar
Public Housing
Earth. Water. Tree.

Art

Bathhouse
Without Body
Earth
It is Your Responsibility
The Bride
Nigun

Bathhouse

Site Specific Art
Installation Artists
House, Tel Aviv. 2013

The famous 19th century painting: Turkish Bath House by Ingres, served as an inspiration for this installation, made out of paper-mache, and two video arts. Ingres bathhouse depicts a harem full of exposed women, in different poses, viewed through a round pip-hole. This installation is about male objectifying gaze, but also about female self-criticism. The installation transforms the painting into a three dimensional work, with paper-mache female figures placed in various poses as in the original painting. In contrast to these white pure bodies on the floor, the slow-motion videos on the walls are of the artist's dirt-covered body, a female bathing in mud. This juxtaposition between white and black, clean and dirty, empty and full, replaces the male gaze that peeks into the bathhouse with the ever self judging female gaze.





Without Body

Site Specific Art Installation
Carmel Gallery, Haifa. 2010

An Earthwork installation that examines the relationship between space and the female body using earth as the primary medium. The American Earthworks of 1969 inspired a series of feminine earthworks resulting in this installation. Made out of ropes covered with earth and glow, Ayalon created cocoon-like shapes, hanging from ceiling to floor. Creating a narrative of different areas with different earth formations with one main aim - to collect earth and pick it up in the air. To make earth fly, To create a space full of earth. To enable the viewer to walk-into earth.





Haifa Museum of Art,
100 Years to Ready-made Exhibition



Earth

A Commissioned Art Installation Composed of 1000 Landscape Paintings. Haifa Museum, 100 Years to Ready-made Exhibition. 2013

To challenge the concept of ready-made today a random piece of landscape in Israel was picked and photographed according to a tight mechanism dictating where and how to take the pictures. 1,000 photographs were chosen and sent to China to be painted in oils according to specific instructions.

The 1000 oil painting now creating a "Israeli landscape made-in-China", suggest a new way of thinking on the landscape painting genre, as well as on the relations between East and West and the ability to present an art object with no origin. Earth Installation was presented in three different locations.

[Link to the project website](#)



171 Nanjing Rd. Shanghai
Commercial space transformed into gallery for the Shanghai art biennale.



Dizengof Center Tel Aviv
Commercial space transformed into gallery.





Focus Group: Fear

A Solo Performance,
Acre Theater Center, Acre, 2017

A theatrical event in which the audience becomes participants in my Ph.D research and the research tool of a Focus Group, serves as a mechanism for organizing the performance. This solo performance stemmed out of my PHD research process, as participant observations evolved into participation in an artist incubator. The performance imitates the research method of a focus group and translates the academic concepts of segregation and boundaries into 'fear' as used in everyday language. As part of the show, the research findings regarding Acre's segregation were shared with the audience, and encouraged them to contribute their own stories of fear. Within it the boundaries between exhibition, representation, story, dance and research blur. During the performance, the participants' fear stories are interwoven with the researcher's fear story, combining field diaries ethnographic text, video arts and dance combinations that emerges when all other expressions are incompetent.

▶ [Link to the performance storyboard](#)



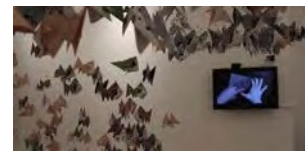
Nylon Architect

A solo performance
Acre Theater Center, Acre, 2018

In this solo performance a nylon architect destroys and builds three homes:
The first home collapsed due to madness, the second home collapsed in a dream and
the third home is still hanging.

▶ [Link to the performance storyboard](#)





WishFish

An Installation and Social Action
Grand Art Gallery, Haifa. 2014

In a year-long process at elderly day centers, schools and children's hospitals, new-year wishes were collected and folded by the participants into Origami fish. Those were combined into a ritual of folding a new year's wish and adding it to a large installation built to accommodate 3,000 fish.

The installation was reassembled at Part of a group exhibition in deserted building in Tel Aviv, at which some more 1000 wishes were added and thrown into "Wishing Wells".

▶ [Link to the event Facebook page](#)



The Bride

Multiple Participate
Performance Reading 1, Tel
Aviv port, 2013

In a call for volunteers 100 fake brides were recruited and participated in a massive bridal fare. The performance consisted of six bridal stations in a circular arrangement which were projected onto six large screens located in varied positions in space. The performance mechanism created an assembly-line with the participation of 100 brides. Each of the brides was asked to walk along a path of tests, physical and mental, aiming to check whether she is made out of bridal material.

▶ [Link to the event Facebook page](#)



Nigun

Sound Installation
Israel Museum Jerusalem 2012 & Haifa Art Museum
2013

A sound installation, which contained 30 acoustic instrument musicians standing along the museum main path. The installation was based on a simple rule: each musician starts to play only if someone presses his yellow button. The song "Jerusalem of Gold", a mythological canon of the Zionest movement, was deconstructed and reconstructed by the musicians and the audience. This mechanism yielded a cacophonous unique sound instrument that responded to the audience movement along the museum space.

▶ [Link to the event Facebook page](#)

The Bedouin School Building Khan Al Ahmar

Chief Curator at:
Gitai Architecture Museum, Haifa, 2016

The exhibition focuses on the structure of the Khan al-Ahmar Bedouin school in the Ma'ale Adumim area. It raises public attention not only to the architectural dimension of the school - based on recycled tires and compacted soil - but also to its social and educational role, as a school of a marginalized nomadic community in Israel. The exhibition served as a way to raise the public awareness to the demolition order that threatens the existence of the building.

The school, located in a border area, was designed by the Italian organization VENTO DI TERRA, which works for human rights and the environment. The construction method that characterizes the organization uses recycled tires covered with compacted soil. The school was built in 2009 for children of the Jahalin Bedouin community. Until its opening, children from the area were forced to reach remote educational institutions on high-cost trips that involved a risk to their safety. The demolition order that threatened the building is still standing. For the exhibition, I lead an educational collaboration with primary school kids, focused on ecological construction and human rights, with a group of students the same age as the Bedouin students. The Haifa students built under my guidance a 1:50 scale model of the Bedouin school and in the process engaged with human rights issues and the unique ecological construction method.



▶ [Link to the museum website](#)

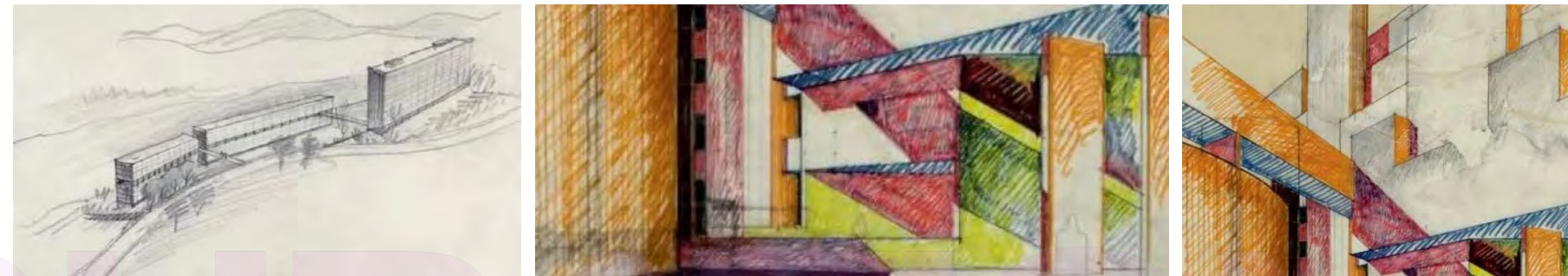
CURATION



Public Housing

Chief Curator at: Gitai Architecture Museum,
Haifa, 2016, in collaboration with Pompidou Museum Paris

The exhibition seeks to re-discuss the issue of public housing and emphasize its relevance today through a number of historical and contemporary projects in Israel and the world. All of the projects featured in the exhibition deals in their own way in developing unique public space of social partnership. The exhibition brings together a collection of black and white images that simulates a facade of a public housing building. More than historical accuracy or the act of a design, the exhibition examines the inexpensive means the cooperative aspect of each of the projects selected. Revisit the architectural thinking that emphasizes the social element in planning and living beyond personal private space that allows a place of mutual help and togetherness. The earliest projects presented, were built in the twenties of the last century, the latest ones include three current projects of French architects Lacaton & Vassal which restore the sex appeal of public housing. Through them, the exhibition tries to understand the nature of those community areas that defines the scope of cooperation, formed open intermediate spaces that were shifted from the street and allowed a precise response to the needs of tenants.



▶ [Link to the museum website](#)

CURATION



Earth, Water, Tree

Environmental Aspects in the Works of Itzhak Danziger
Chief Curator at:PeKa Gallery, Technion, Haifa 2010

Itzhak Danziger, 1968 Israel Prize laureate and a professor in the Technion Faculty of Architecture, will always be remembered as an artist, a sculptor, an educator and a landscape designer, who left his mark on the Israeli art world and on Israeli cultural consciousness as a whole.

The exhibition Earth. Water. Tree. was based on my Master Thesis research and focused on Danziger's later works, from the beginning of the 1970s until his death in 1977. His interest in those years was in garden design, and the study, drawing and photography of holy places, ritual sites and landscapes. The exhibition recreates two legendary installations: Hanging Artificial Landscape and Aqueduct. These ambitious projects, like his concept of landscape in general, demonstrate his belief in the role of the artist as an intermediary between art in all its different disciplines and science and technology, and as a social healer. His contribution to both artistic theory and practical creativity inspired a new aesthetic language, paving the way for even marginalized members of society to put down roots and become an integral part of the landscape, appreciate its natural cycles, and make it flourish without attempting to return it to what it once was.

CURATION

Scroll of Light Synagogue

Practicing Architect at Knafo Klimor Architects, Haifa, Israel
 Client: The Caesarea Foundation Edmond Benjamin de Rothschild
 Caesarea , Israel, Area: 800 sqm, Status: Completed 2007

The building is designed as a spiral which aims to express the cyclical aspect of Judaism and the connection between circular time and linear time. The experience of circular time is one of recurrence and cyclical motion. The experience of linear time is one of development and change along the timeline. These two systems meet at momentary unique moments in time thus creating the spiral continuum.

The hub of the Scroll's junction forms the prayer hall, isolated from its surroundings by the lack of direct visual contact with anything else. The isolation transforms the place into a microcosm where the strongest force is that of the light penetrating the building through openings in the ceiling. This hidden light washes over the curved walls which come together towards the Holy Ark. The Ark hovers over a pool of water and is lit by a soft indirect light that is reflected in the pool. The place's symbolism as a "Scroll of Light" aims to emphasize the meaning of the creation of light as the foundation of life and as a symbol of truth, knowledge, and hope.

Project Awards:

AI -Architecture of Israel – Project of the Year 2008, Citation

Publications Most beautiful synagogues – ynet.co.il

Synagogue in Caesarea-Transparency and Modesty, Domus 009, Sep 2010, pp 105-108 "Project Of The Year" Exhibition, zezeze gallery



[Link to firm website](#)

ARCHITECTURE



Maalot Music Conservatory

Practicing Architect at Knafo Klimor Architects, Haifa, Israel
 Program: Recital hall, classrooms & administration, Maalot
 Tarshiha, Israel Client: the Sakta-Rashi Fund Area: 1,500 sqm
 Status: Completed 2004

Maalot Tarshisha conservatory is a place for music and enchantment. The conservatory is installed on a hill in the midst of town where it can view the urban city's landscape on one hand, and the idyllic wood-hills of the Galilee on the other. Beyond being a place for the savoring of sounds and melodies this center is also a place for a fertilizing multi-cultural debate and exchange of ideas while maintaining the mutual respect of people and traditions. It is a meeting place of creation and inspiration, for the unique mixture of arab and jewish inhabitants and newcomers from the recent years. The ethnic and cultural encounters create an exceptional opportunity to bring together different kinds of cultures, languages and aspirations. The architecture of this structure was inspired by this community and was designed to crystallize it in its spaces and facades. The building is a composition of glass and stone boxes roofed by aluminum panels holding each-other as a human chain in a dance-circle.

Project Awards

Klil Industries – Award for excellence in public building design, 2008

AI – Architecture of Israel – Project of the Year 2006-7 , third prize

▶ [Link to firm website](#)

ARCHITECTURE

▶ [Link to firm website](#)



Pine Hill

Practicing Architect at Knafo Klimor Architects, Haifa, Israel
 Program: Urban Planning of a Residential Neighborhood Client: Israel's Ministry of Housing Area: 435,000 sqm

This residential neighborhood planning places an emphasis on connecting the main road systems and linking the new development to the existing city of Ma'alot as well as to other main cities in the area.

Following the topographical structure of the hill, the concentric plan leaves at its top room for an existing pine grove. From it a pedestrian walkway is developed and reinforced by it's the public buildings on both ends of its borders. At the eastern entrance to neighborhood Pine Hill, a circular ring was planned to protect a nature reserve of unique cedar grove. To the west of this ring there is a commercial and educational center, including kindergartens, primary and secondary schools, playgrounds and sport fields. The residential buildings are designed as terraced building typology that integrates with the topography and allows every tenant to enjoy a piece of land and / or a garden terrace adjacent. This type of construction ensures a higher quality of building which is suitable for the higher standard of living required by the municipality to strengthen the socio-economic status of the population.





Matzliach Neighborhood

Practicing Architect at Knafo Klimor Architects, Haifa, Israel. Program: Urban Planning of a Residential Neighborhood Client: Israel's Ministry of Housing Area: 435,000 sqm

Ramla has an exceptional geographical location that gives the city unique advantages and potential for rapid integration into the economic and urban development of Israel's Central District. The new planned Matzliach Neighborhood is adjacent to the cross country road, highway 6, and it will connect naturally to the city via two main arteries, Bialik St. and Klausner Street, thereby creating continuity between the Old City and the new neighborhoods. A wide park is planned in the centre of the neighborhood which will create an urban meeting place for local residents. The proposed development offers a variety of residential models: typical residential high-rise building and ground floor houses, around a semi-public space for the benefit of the building residents.

Public institutions are located along the roads within the optimum utilization of land. A significant wide green stripe with a promenade, playgrounds and extensive green areas will connect the neighborhood and the main roads.

▶ [Link to firm website](#)

Urban Systems

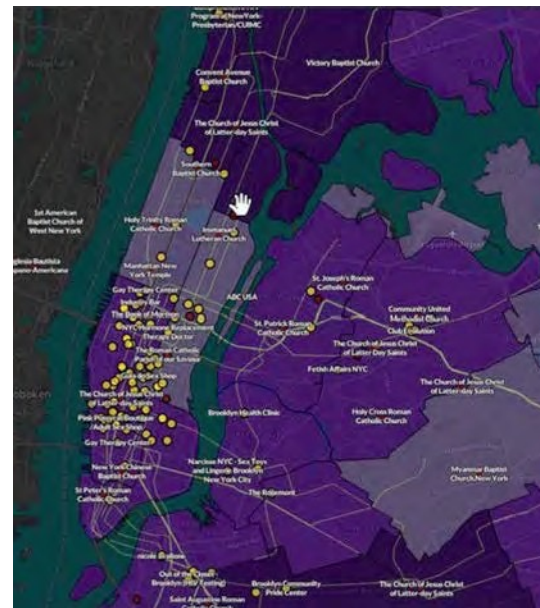
Defending Density – Is this the Death of the City?

In the wake of the COVID-19 pandemic this course explored the ways in which a city is composed of complex interactions of systems, ranging from infrastructure and transportation to social, cultural and political systems. Students were introduced to the concept of the city as a “system of systems” and the needs of users operating and interacting within such systems. The course offered a broad perspective on pressing urban challenges such as sustainability, resiliency, and equity. A special focus was placed on emerging technologies such as IoT and Big Data and their practical applications to tackle such challenges. Students gained knowledge of how to model systems to support useful simulations and build solutions. In addition, students developed strategies to transform cities and improve urban life. The course consisted of a combination of classic texts and contemporary readings, case studies, site visits, hands-on assignments, team-oriented projects, and visiting lectures by leading urban practitioners.

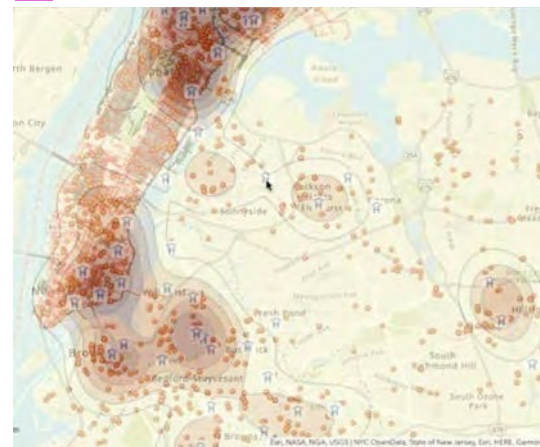
Students learned how to create interactive maps to visual representant hard and soft systems of the city through hands-on assignment. In addition, in a semester-long group project the students developed a comprehensive strategy to reopen a city after a pandemic. Covering Approach to the reopening offices, construction and manufacturing schools and universities, shops and restaurants, cultural and recreational facilities and an overall reopening strategy.

▶ Click the map for a link to video file

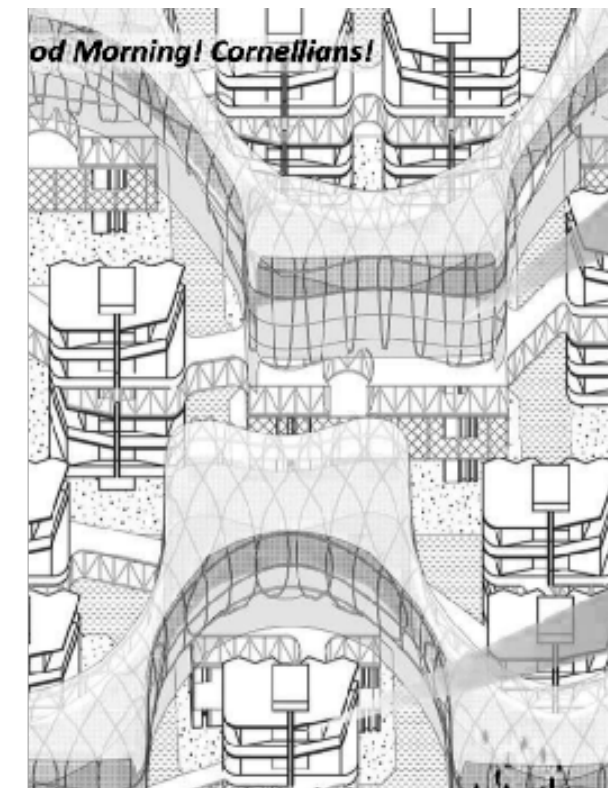
Urban Tech Hub | Graduate Course Fall 2020 , Cornell Tech



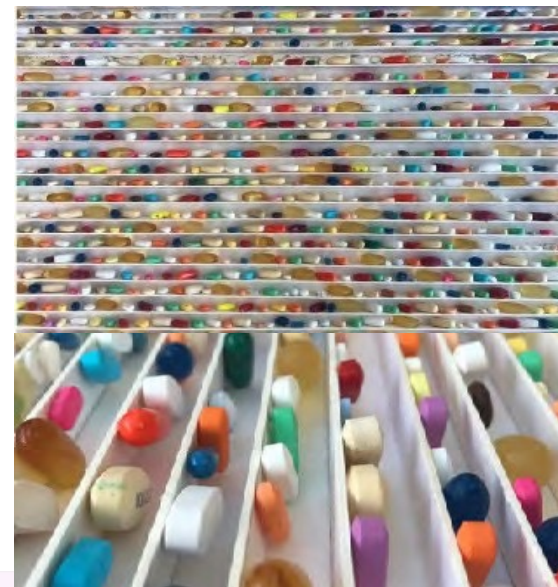
[The relationships between LGBTQ+ communities to religious institutions that condemn same sex marriage and HIV diagnosis.. Student – Isiah Muary](#)



[Distribution of hospital in relation to socio-economic status and elderly citizens walking habits. Student - Choalei Hua](#)



Reopening NYC Education System | Students - Jeanne Li, Alexander Amy, Guangyu (chris)Yan, Kaiyuan Deng



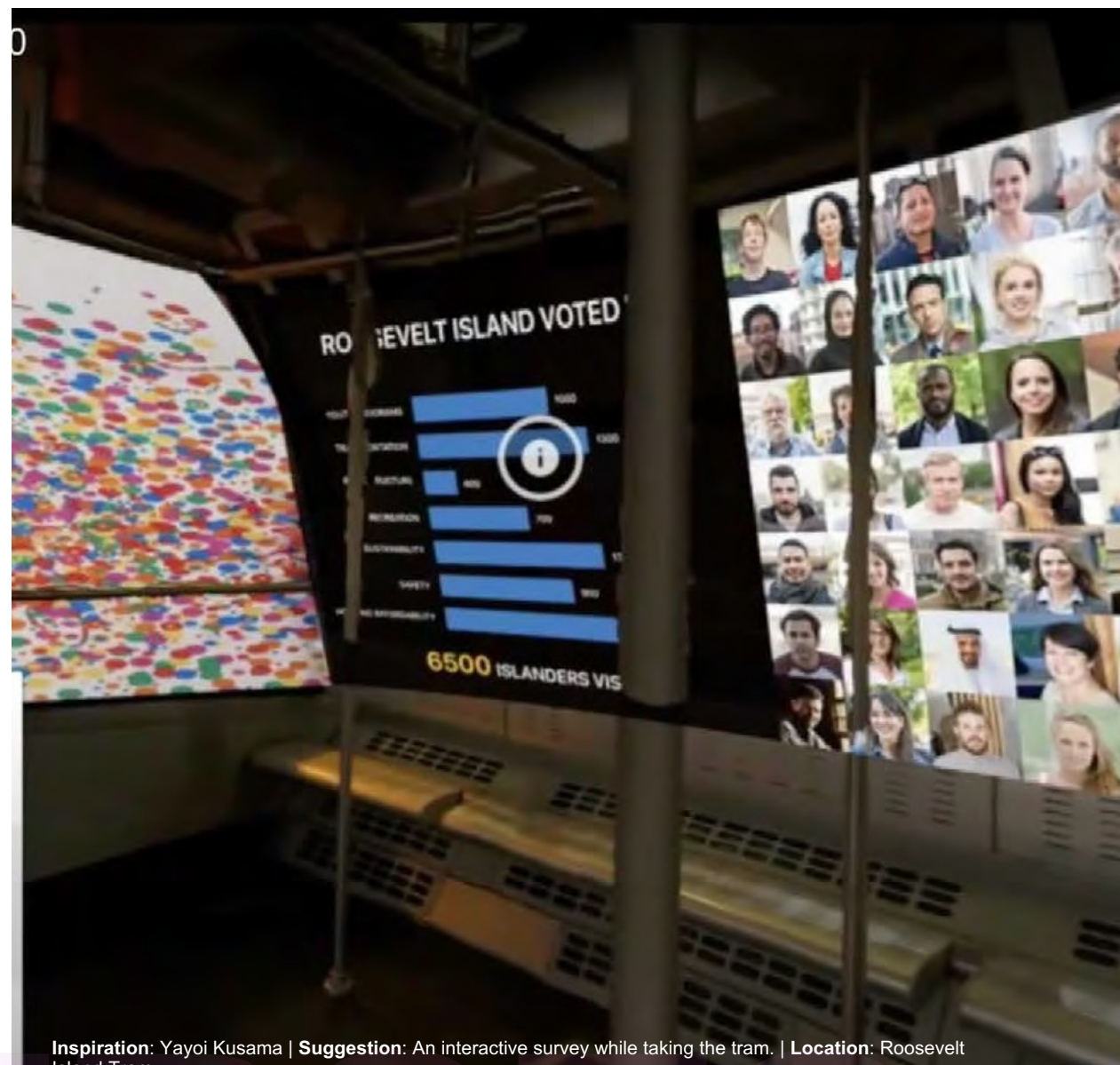
Student Lior Hudson, Yuval Fine, 2018, Halla Hamza, 2019, Shir Finer, 2018, Daniel Feinstein, 2017

Basic Design 1+2

Faculty of Architecture and Town Planning, Undergraduate Course 2017-2019 | Technion Israel Institute of Technology

BASIC DESIGN 1 is a fundamental studio course that provides students with a background in all areas of design and teaches them the elements of visual language. It deals with formalistic issues such as shape, material, value, shadow, plastic complexity, and 3D features, in addition to more abstract principles of perception, emotion, senses, and experience. Students are asked to express concepts such as “tension” or “harmony” (among others) in 2D and 3D compositions and objects. Through a learning-by-doing process, and personal instructions students develop a series of objects that utilize visual language to express symbolic, conceptual, and metaphorical meanings.

BASIC DESIGN 2 takes design elements to a larger scale, and students develop human size 3D sculptures, site-specific installations, and urban interventions. Based on the same process of personal instructions and learning by doing this course highlights the importance of the specific place and context, physical attributes, as well as social or political. Therefore student’s assignments include site analysis, drawing, and documenting the location as a way to observe and understand the site - to create interventions that stem from or react to the environment in which they are located. These two courses teach students essential elements of visual language, encouraging them to translate abstract ideas into form, shape, color, and helping them understand and utilize the power of visual language in conveying meaning, affecting decision making, and changing points of views.



Inspiration: Yayoi Kusama | Suggestion: An interactive survey while taking the tram. | Location: Roosevelt Island Tram

Urban Challenge

An Interactive Exhibit to Engage Communities In Planning. Student: Anam Tahir, Joy Liu, Yuxi Sun
Community member: Eneaqua Lewis

As part of community engagement projects of the Maker Lab at Cornell Tech I worked with a team of students and community members from Roosevelt Island to develop 3D interactive exhibits to engage communities in planning processes.

Inspired by the Japanese artist Yayoi Kusama that creates white installations for the audience to fill with colorful dots, the students developed an interactive exhibit incorporated with a survey of the community's opinion on their environment.

The exhibition was planned as an interactive survey while taking the tram that leads to the island. Upon entry, riders would fill out a questionnaire regarding changes they wish to see in their neighborhood. Through this survey, they would be instructed to choose a colorful dot and place it wherever they fill right inside the tram. Each color represents a theme - Green for Sustainability, blue for Housing Affordability, red for Safety, orange for Recreation, and purple for Youth programs. The accumulation of dots will create a visual representation of the changes people wish to communicate to their municipality representatives.

▶ [Link to students presentation](#)

Craft@large, Lecturer Niti Parikh Graduate + Community members
Course Fall 2019 | Cornell Tech

Curation as Architectural Practice

Faculty of Architecture and Town Planning, Graduate and Undergraduate Course 2017-2019 | Technion Israel Institute of Technology

This course combines lectures on the discipline's historical and theoretical background with a workshop in which students learn to design and produce exhibitions. Starting from its curatorial concept, to the selection of the body of works, to figuring out how to present them in space in a manner that most effectively conveys the concept, to designing the viewer experience. As their final project, students curate their fellow's senior year final architecture projects and exhibit them in a well-known public gallery in Tel Aviv.

Through this process, students experience all stages of the exhibition creation process and enjoy the opportunity to execute a real-life exhibition project in 1:1 scale. These two learning outcomes are exceptional in architecture school, where the learning outcomes are usually models and representations. The course also encourages students to engage with communities and to interact with the world outside of academia; to develop a social, political, architectural, or environmental message; and to deliver it in visual language. The intended outcome is more socially aware and involved young architects.

▶ [Link to promotion video for the exhibition](#)



Students working to build their installation in the gallery
Rothschild Gallery – Tel Aviv, 2018



Students: Ranim Jafar, Perla Aramla, Nadin Shukha, Amir





Roosevelt Island Digital Twin

Postdoctoral Associate, The Urban Tech Hub, Cornell Tech Jacobs Institute | Cornell Tech, Ongoing Research Project 2021

The Roosevelt Island Digital Twin is a smart planning tool which combines a 3D model of the physical characteristic of the island (buildings, roads, parks), with socio-economic data and demographic information. It is a virtual representation of the island with layers of data and analysis that can be added to physical visualizations. Unlike the use of digital twins in industry, which primarily focus on the built-environment, our emphasis is on the less visible, social aspects of urban life such as inequality and community resiliency. The Digital Twin is a base for two current research projects:

THE URBAN DISPLACEMENT SIMULATOR is a data-driven tool for predicting the social effects of privatization of affordable public housing. Through a microsimulations we predict the demographics changes of Roosevelt Island. The simulation forecasts the socio-economic profile of the households that will be able to stay in their homes after privatization, the profile of those who will be forced to leave, and the profile of the newcomers, providing a new perspective on the invisible impacts of policy choices.

THE UNDERWATER EXPERIENCE is an immersive experience to increase community awareness of climate issues. The Digital Twin is used to forecast projected sea level rise and extent of inundation on Roosevelt Island in 2050. These projections are then rendered into an immersive virtual-reality tour of Roosevelt Island that depicts different possible impacts of flooding and climate change. The tour will be experienced while people are riding the Roosevelt Island red bus. We will bring community members together in focus groups (in person or online) to discuss resiliency planning on Roosevelt Island; to survey their attitudes and note the points of discussion prior to and after the immersive experience.

▶ [Link to video](#)

RESEARCH

Staging Urbanism

The Intersection of Art, Space, and the Public.

Faculty of Architecture and Town Planning, Technion, Haifa, Israel
 Advisors: Prof. Tal Alon Mozes and Dr. Meirav Aharon-Guttman,
 Ph.D. Graduation date: Feb. 2019. PHD Research.

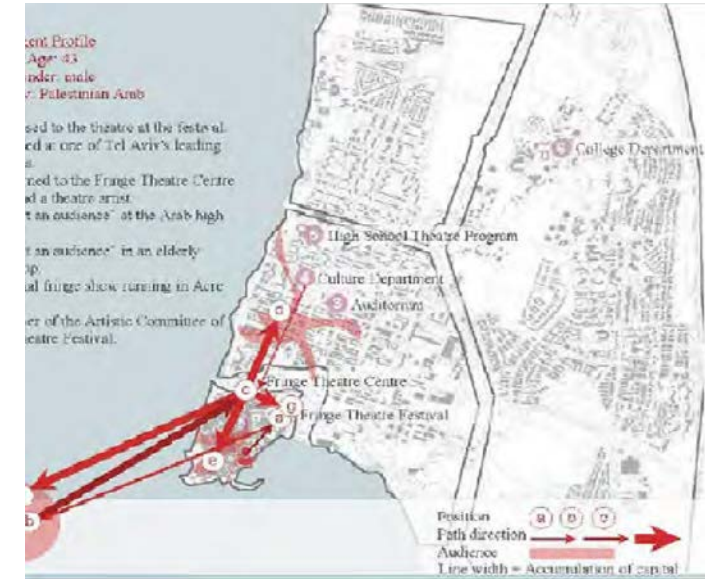
A socio-spatial research that explores the reciprocal relationship between art, urban space and the public., It suggests that this three-headed intersection, forms a conceptual framework for deciphering the unique urbanism of the city in which they takes place. The research expands the theoretical discourse regarding this relationship beyond the common perspective of art as an urban renewal strategy to position it within the theoretical discourse on urbanism. Through a discussion, that ranges between macro and micro perspectives and between art's ability to reinforce or subvert the socio-spatial structures of the city, this research presents the unique characteristics of Acre as an example for a peripheral mixed city in the Middle East.

On the one hand, the research demonstrates how the city's socio-spatial structures, stemming from the continual Israeli-Palestine conflict, are replicated in the city's artistic activity. This insight is analysed first through a macro perspective of the five theatre institutions, showing how each institution functions as a closed sphere, which addresses only a small part of the population, and therefore fails to challenge the urban socio-spatial power relations.

▶ Click the image for a link to full text



Ph.D. Exam – a theatrical setting in 3 screens.



[Enabling Peripherality](#)
[Artistic Trajectories in a Peripheral City , Cultural Sociology](#)



[Can art breach boundaries ?](#)
[Segregation and Hierarchy at a Fringe Theatre Festival in the Israeli Mixed City of Acre. Journal of Urban Design,](#)



[The Shape of Theatre in the City: A Theoretical and Methodological Approach for Analyzing Artistic Activity in Urban Space: Journal of Urban Affairs.](#)

RESEARCH

A photograph of a wooden fence with colorful paper decorations and shadows of leaves cast on it. The fence is made of vertical wooden planks. On the left side, there are several strings of colorful paper decorations, including triangles and squares in shades of blue, green, and purple. The background is a bright, slightly overcast sky. The shadows of leaves and branches are cast onto the fence, creating a pattern of dark shapes. The overall mood is bright and festive.

Sharon Yavo-Ayalon

Selected Students Works

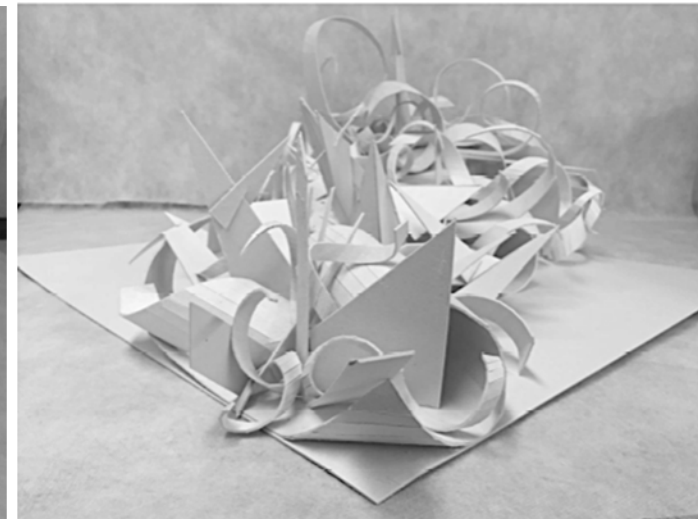
Disharmony

Translating an abstract concept into form in a six-part project in which students use the same composition to practice the transformation from 2D to 3D.

Student: Halla Hier, 2017

In this exercise students learned how to translate an abstract idea such as Disharmony, into visual language.

They begin with a two- dimensions composition in black and white and continue with expressing the same idea with color. As an intermediate stage between 2D to 3D, they create the same composition using embossing technics and practicing the effect of color and different materials on the composition. The final stage of this exercise is to build a 3D object with the same concept in mind.



Basic Design 1, Faculty of Architecture and Town Planning, Undergraduate Course 2017-2019 | Technion



Disharmony

Translating an abstract concept into form in a six-part project in which students use the same composition to practice the transformation from 2D to 3D.

Student: Yuval Fine, 2018

In this exercise students learned how to translate an abstract idea such as Disharmony, into visual language.

They begin with a two- dimensions composition in black and white and continue with expressing the same idea with color. As an intermediate stage between 2D to 3D, they create the same composition using embossing technics and practicing the effect of color and different materials on the composition. The final stage of this exercise is to build a 3D object with the same concept in mind.

Basic Design 1, Faculty of Architecture and Town Planning, Undergraduate Course 2017-2019 | Technion



Hybrid

A 3D sculpture to represent hybridity, by combining a ready made found object with a body organ,
Student: Tal Arkind, 2018

Basic Design 1, Faculty of Architecture and Town
Planning, Undergraduate Course 2017-2019 | Technion



Lacuna

A human-scale sculpture that represents an opening or partition. In this case the students choose to address the movement of the body though and opening.

Student: Juan Marjeh, 2018

Basic Design 2, Faculty of Architecture and Town Planning, Undergraduate Course 2017-2019 | Technion



Tension

A human-scale sculpture that represents an Tension. In this case the students choose to address her military experience and the anonymity created by the uniform. Human scale 3D object to represent tension. Student:: Lior Hudsman, 2019

Basic Design 2, Faculty of Architecture and Town Planning, Undergraduate Course 2017-2019 | Technion



Transition

Site specific installation to transform the meaning of a place.
From an elevator to a private room
Student – Sharon Arad, 2019

Basic Design 2, Faculty of Architecture and Town
Planning, Undergraduate Course 2017-2019 | Technion



It's a Girl

A 3 by 3 meters exhibition, focusing on the issue of girls "genderscide"

Students: Ranim Jaafer, Perla Armala, Nadin Shukha and Amir

The three deadliest words in the world are... **It's a Girl**. In India, China and many other parts of the world today, girls are killed, aborted and abandoned simply because they are girls. The United Nations estimates that as many as 200 million girls are "missing" in the world today because of this so-called "gendercide". Girls who survive infancy are often subject to neglect, and many grow up to face extreme violence and even death at the hands of their husbands or other family members. The war against girls is rooted in centuries centuries-old tradition and sustained by deeply ingrained cultural dynamics which, in combination with government policies, accelerate the elimination of girls.

Based on a documentary film by this name, the exhibition **It's a Girl** reveals the issue of girls gendercide. The film tells the stories of abandoned and trafficked girls, of women who suffer extreme dowry-related violence, of brave mothers fighting to save their daughters' lives, and of other mothers who would kill for a son. In the exhibition, this story is tolled on the ground level. Creating a surface that resembles a grave. A very small grave at the size of a baby. In each grave a different imagery and extract of the movies is presented with data about each case. In order to hear their stories the viewer is forced to band down to observe the grave like hole closely.

Curation as Architectural Practice, Faculty of Architecture and Town Planning, Undergraduate and Graduate Course 2017-2019 | Technion Israel Institute of Technology



Exhibition Poster



Middle

Final Project – Curating the Architecture Bachelors
 Final Exhibition in a Public Gallery in Tel Aviv
 2017, White City Center – Tel Aviv

As their final project, students curate their fellow's senior year final architecture projects and exhibit them in a well-known public gallery in Tel Aviv.

Through this process, students experience all stages of the exhibition creation process and enjoy the opportunity to execute a real-life exhibition project in 1:1 scale. These exceptional learning outcomes are unique in architecture school, where the learning outcomes are usually models and representations. The course also encourages students to engage with communities and to interact with the world outside of academia; to develop a social, political, architectural, or environmental message; and to deliver it in visual language. The intended outcome is more socially aware and involved young architects.

Curation as Architectural Practice, Faculty of Architecture and Town Planning, Undergraduate and Graduate Course 2017-2019 | Technion Israel Institute of Technology

Mapping Complexity

Analyze the connections between a hard system to a soft system.

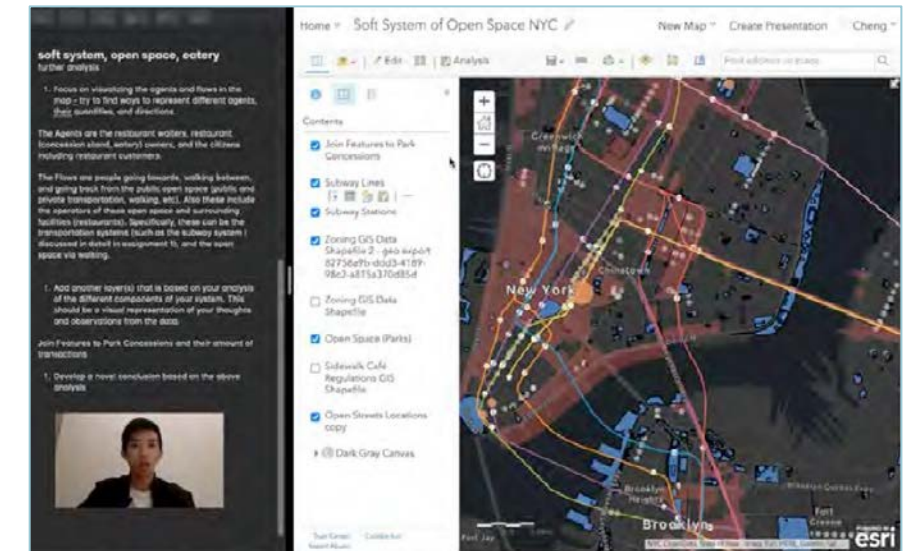
Students learned how to create interactive maps to visual representant hard and soft systems of the city through hands-on assignment. In addition, in a semester-long group project the students developed a comprehensive strategy to reopen a city after a pandem- ic. Covering Approach to the reopening offices, construction and manufacturing schools and universities, shops and restaurants, cultural and recreational facilities and an overall

▶ Click the map for a link to video file

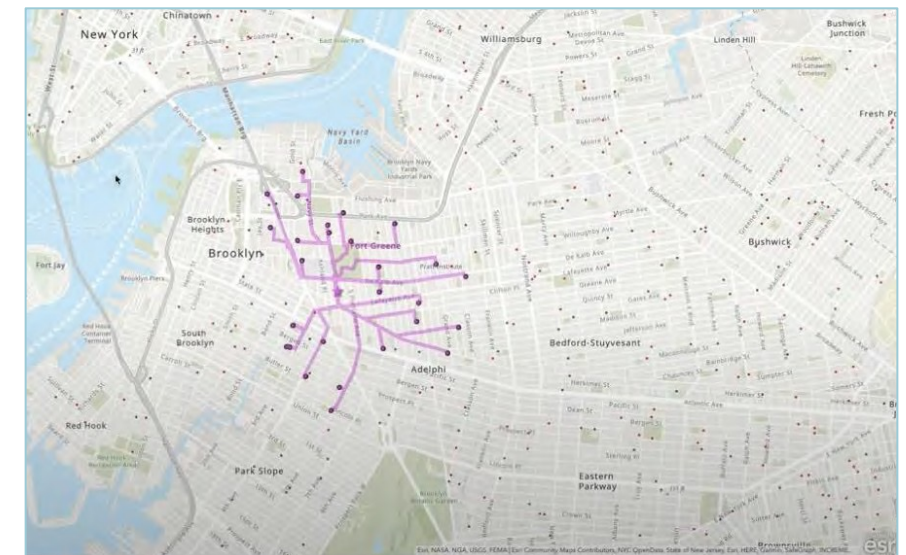
Urban Tech Hub | Graduate Course Fall 2020 , Cornell Tech



[Flood impact in relation to population density, low income population and transportation system Student: Jeanne Lee](#)



[The connection between open spaces, outdoor dining and subway stations in NYC. Student: Cheng Gong](#)



[Public education and after school activity in relation to high school graduation rate and poverty rate Student: Toby Land](#)